



## Wilcom EmbroideryStudio e2.0Q SP2 Update

16 July 2012

This file contains notes on the Wilcom EmbroideryStudio e2.0Q SP2 software update. This update is intended for installation with any released version (already installed) of Wilcom EmbroideryStudio e2.0. The SP2 installation also includes all improvements for the SP1 release.

### Contents

Recommended PC specifications .....	2
Improvements with SP2 .....	3
Bling .....	3
Editing .....	3
ZSK 2 machine support .....	4
Laesser MST design support.....	4
Usability .....	5
Lettering .....	7
Printing.....	8
File handling.....	8
Improvements with SP1 .....	9
Digitizing .....	9
Editing .....	10
Stitching .....	11
Lettering .....	12
Graphics conversion .....	13
File output .....	14
Production Worksheet improvements.....	15
Direct-connect to CAMS automatic bling placement machines .....	17
Design management.....	21
Miscellaneous .....	21
Solving problems.....	22
Copyright .....	23
Contact .....	23

## Recommended PC specifications

Check that your PC meets the system requirements required of EmbroideryStudio. Check CPU/RAM as well as hard disk space. The table below provides minimum and recommended system requirements.

Item	Minimum	Recommended
CPU	Intel® Pentium® 4, AMD Athlon™ 64 or AMD Opteron™	2 GHz + Latest Intel or AMD 32-bit (x86) or 64-bit (x64) multi core processor
Operating system ‡	Microsoft® Windows® 7, Windows Vista®, Windows® XP, with latest service packs installed (32-bit or 64-bit editions)	Microsoft® Windows® 7 with latest service packs installed (32-bit or 64-bit editions)
Browser	I.E. 7.0 or Later	I.E. 7.0 or Later
Internet connection	Required for product registration and access to software updates. For latest operating system information, visit the Wilcom Support Center at <a href="http://www.wilcom.com.au/support">www.wilcom.com.au/support</a> .	
Memory	1GB	2GB (More if running multiple apps)
Hard disk size	40GB	80GB or more
Free disk space †	At least 10GB after installation	20GB after installation
Graphics card	Support for Highest Color (32bit) and resolution (1024 X 768)	Support for DirectX 9 graphics with: <ul style="list-style-type: none"> <li>• WDDM driver</li> <li>• 512MB or higher of graphics memory (non-integrated)</li> <li>• Pixel Shader 2.0 in hardware</li> <li>• 32 bits per pixel</li> <li>• Dual monitor capable</li> </ul>
Monitor ¥	17" at 1024 X 768	Dual monitors capable of displaying 1280 X 1024 or higher
Scanner, printer and Windows-compatible (any connection method – e.g. parallel, USB) plotter		
USB ports	Dedicated USB port for a USB dongle	
Data drives	<ul style="list-style-type: none"> <li>• DVD-ROM drive for software installation</li> <li>• Dual layer DVD-ROM for extras DVD</li> </ul>	Backup device – e.g. CD/DVD burner, tape backup, removable hard drive
Sound card	Required for multimedia training	

### Supported operating systems ‡

- EmbroideryStudio does not support Win98 or Windows NT/2000.
- EmbroideryStudio requires IE 7.0 or higher.

### Free hard disk space †

EmbroideryStudio occupies up to 1Gb of hard disk space, depending on the options installed.

### Screen resolution ¥

Some controls may be hidden on the user interface if you run your monitor at low resolutions. The physical size of your monitor will have a bearing on the optimum screen resolution.

## Improvements with SP2

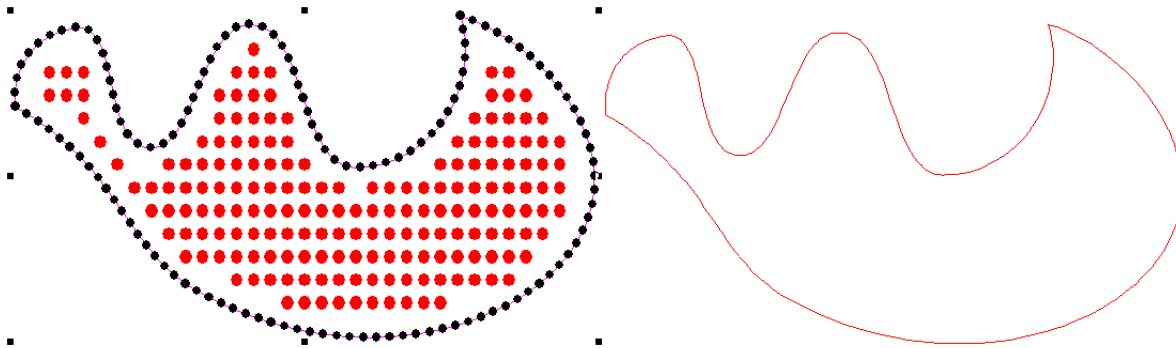
The following improvements are specific to the SP2 release. The major objectives of this release are to:

- Provide improved support for ZSK customers
- Provide improved support for MST format for Laesser Schiffli multihead
- Resolve urgent issues causing support problems

## Bling

### Converting bling objects to vectors

Previously, the **Convert to Vector Object** option converted bling objects to individual circles. Bling objects are now correctly converted to vector outlines.



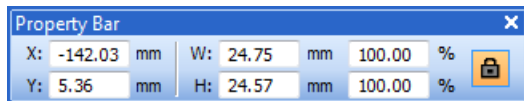
### Rotating bling designs

Previously, when rotating bling designs, bling elements were slightly shifted in relation to each other. This triggered automatic bling removal. Rotated bling objects now keep their relative positions consistently.

## Editing

### Locking aspect ratio when scaling objects

ES e2.0 now allows you to lock aspect ratio tool on the **Property Bar** to maintain proportions when scaling objects. The **Lock Aspect Ratio** toggle is ON by default.



### Setting width to 0 via Property Bar

Object outlines become distorted when setting width to 0 via the **Property Bar** and clicking **Undo**. A warning message is now displayed.

### Resizing by small percentages

Previously, it was not possible to resize objects by very small percentage increments. It is now possible to resize in increments as small as 0.05%.

### Fixing stitches for sequin runs

Previously, edits to sequin run objects caused changes to fixing stitches. This issue has now been resolved.

### **Applying Backtrack / Repeat**

The lost capability of applying **Backtrack / Repeat** to run stitch objects has been reinstated.

Also, for more efficient use of the **Backtrack** feature, the shortcut key **Shift + X** has been added.

## **ZSK 2 machine support**

### **Needle bar information for ZSK-TC machine format**

Previously, ZSK-TC machine format written in ES did not transfer needle bar information to ZSK machines which support both ZSK and ZSK-TC disks. Needle bar information was not displayed on the ZSK machine control panel and the machine operator had to manually assign needle bars to the design. This issue has now been resolved.

### **Machine format values for ZSK TC**

Previously, when saving a design to ZSK TC format and reopening, the number of needles (15) changed to 32 and the 'Trim & Needle No' color change setting to 'Stops'. This issue has now been resolved.

### **Coil functions for ZSK TC files**

Previously, 'Coil On' functions were converted to 'Coil Off' after saving files to ZSK TC format. This issue has now been resolved.

### **Sequin functions with ZSK TC machine format**

Previously, Sequin on/off functions did not appear in the **Stitch List** when using the ZSK 2 machine format. This issue has now been resolved.

## **Laesser MST design support**

Support for the MST file format has been revised:

- Twin Sequin for Laesser MST is now supported
- Laesser MST outputs needle changes by default

### **Needle addressing in Laesser machines**

Previously, saving to Laesser MST converted Color Changes to Stops by default. This was suitable for Laesser Schiffli MTC machines. However, for machines that support needle addressing, Color Changes need to be output as Needle Pattern changes. If you want to preserve ATC numbers, you had to select ATC from 'Color Change As' in the Laesser Save Properties dialog.

The new 'Color Change As' default has been changed to ATC. This is suitable for Laesser's ATC machines as well as the new 'Schiffli Head' machine.

**Note:** This may inconvenience existing Schiffli customers as their settings will revert to the new defaults, losing whatever changes may have been made in the Schiffli Save options dialog. Also, users with older Schiffli MTC machine models may prefer to use Stops as ATC might not work. They will need to revert the 'Color Change As' setting back to Stop.

### **Twin Sequin support for Laesser MST**

ES e2.0 now supports reading and writing of Twin Sequins in MST format. This enables Twin Sequin functionality in Schiffli machines to allow Laesser MST files to be saved and loaded with twin sequin information. In older Schiffli machines, sequin behaviour is restored if you change the Sequin Type to 'Single' for Schiffli machine options.

**Note:** The MST format actually supports Tri-sequin and even multiple sequin dropping. ES e2.0 does not support multiple sequin drops at this time – there will be some data loss during conversion.

### Object shifts in Laesser MST files

Problems associated with object shifts in native Laesser MST designs have been resolved. Objects now correctly align when opened in EmbroideryStudio.

### Schiffli machine format with sequin designs

Problems have been reported with Schiffli machine format in relation to sequin designs. Attempting to save designs in MST format (without changing machine formats) also gave a Generic Write Error. These issues have been resolved.

### Save Options dialog for Schiffli file formats

Previously, the **Save Options** dialog did not appear properly when saving some Schiffli file formats. This issue has now been resolved.

## Usability

### Sizing of the Object Properties docker

Problems have been reported in relation to sizing of the **Object Properties** docker. This width of the docker can sometimes increase when it is unpinned (i.e. 'Auto-Hide' is on). This issue has now been resolved.

### Sizing of the Carving Stamp docker

Problems have been reported when resizing the **Carving Stamp** docker. If it is resized to the minimum width and the set changed, the pattern chooser appears empty. This issue has now been resolved.

### Display of Windows 7 design thumbnails

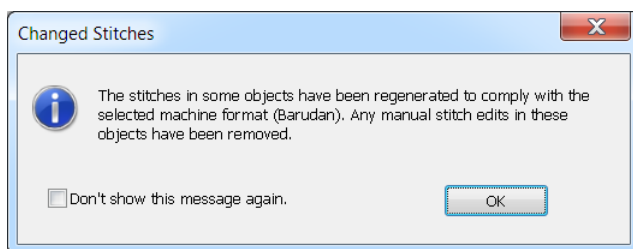
Previously, Windows 7 design thumbnails were not displayed in the **Open** dialog when **Show Thumbnails** was selected. This issue has now been resolved.

### TrueView with large numbers of Sequins

Problems have been reported when using TrueView with designs containing a large number of sequins. TrueView is slow to display, particularly with Connectors turned off. Also, in Trueview, some sequins disappear altogether when connectors are turned off. These issues have been resolved.

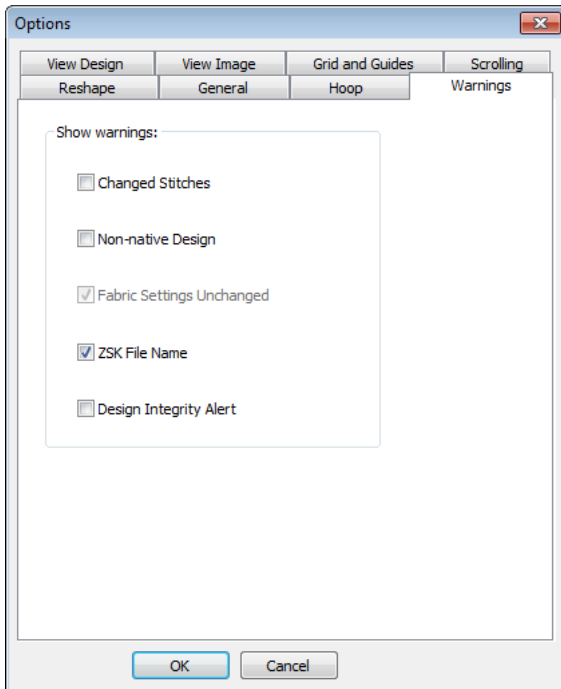
### 'Changed Stitches' warning message

When sending designs to Stitch Manager, a 'Changed Stitches' warning message is sometimes displayed depending on whether stitches need to be regenerated to comply with a changed machine format. You now have the option of turning off the warning message. You can reinstate it via the new **Options > Warnings** tab.



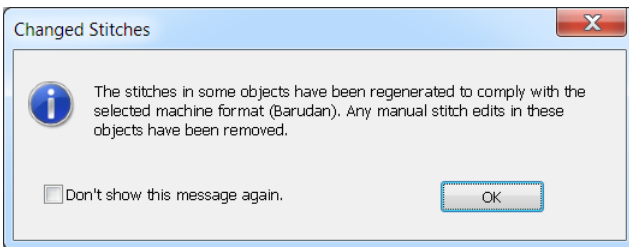
### Warnings options

Some warning messages – such as the **Changed Stitches** message above – may become distracting. You may want to switch such warnings off but still be able to re-activate them at a later time. The **Options** dialog includes a new **Warnings** tab which allows you to re- or de-activate specific warning messages as desired.



Warning messages that can be deactivated 'on-the-fly' include:

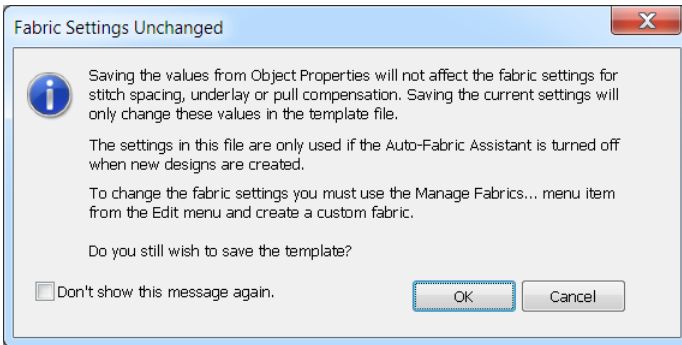
- **Changed Stitches message:** This appears when sending designs to Stitch Manager, depending on whether stitches need to be regenerated to comply with a changed machine format.



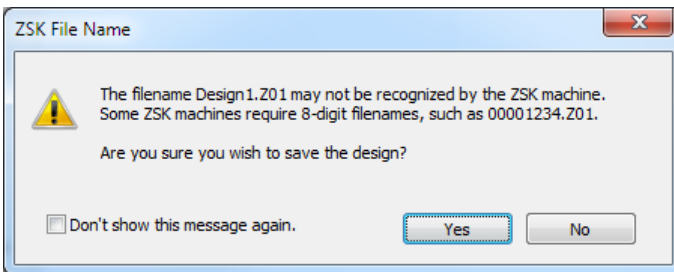
- **Non-Native Design message:** This appears when opening 'stitch files' of unknown origin. Stitch files cannot be scaled by more than approximately  $\pm 5\%$  since their stitch count does not change. By contrast, 'outline files' such as native EMB, can be scaled by any factor as stitches are dynamically regenerated.



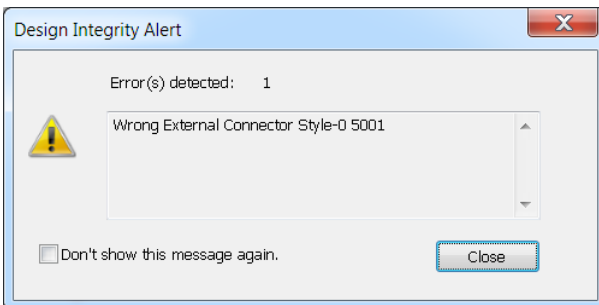
- **Fabric Settings Unchanged message:** This appears if you have chosen to work with an auto-fabric and wish to save changes made to object properties. Any changes are saved to the template, not to the fabric itself. Such changes are overridden by current fabric settings.



- **ZSK File Name message:** This appears if you try to save a design to ZSK TC format with an alphanumeric file name. ZSK machines require 8-digit filenames.



- **Design Integrity Alert message:** This appears if the software detects a problem with the design file. If you see an alert, you should use **Undo** to return the design to an error-free state. Save the design. Then save a separate instance of the design up to the point the alert is generated. Send both designs to Wilcom Support for analysis.



**Note:** Turning off this message also turns off design integrity checking.

## Lettering

### **TrueType font display distortion on widescreen monitors at high resolution**

Previously, some TTF lettering displayed incorrectly. Letters appeared stretched by wide resolution even after display monitor calibration. This issue has now been resolved.

### **Display of TrueType fonts in the Convert TrueType Font dialog on Windows 7**

On Windows 7 OS, TrueType fonts that are not designed for input language settings are hidden by default. Previously, these TTF did not appear in the **Convert TrueType Font** dialog. These fonts are now available in the dialog.

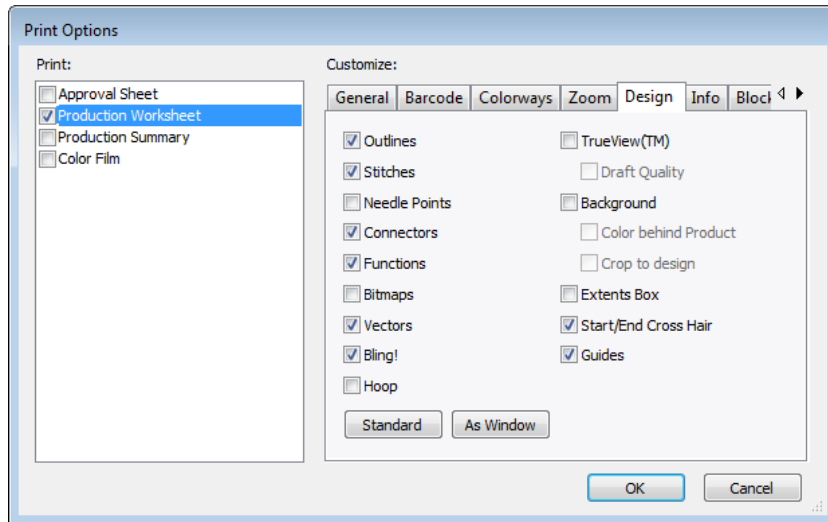
## Availability of TTF fonts in the Alphabet dropdown on Windows 7

On Windows 7 OS, TrueType fonts not designed for input language settings are hidden by default. Previously, these TTF did not appear in the **Alphabet** dropdown in **Embroidery** mode. However, the same fonts were available in **Graphics** mode. These fonts are now available in **Embroidery** mode.

## Printing

### Option to turn off production worksheet guides

When contrasting colors are used in the colorway for guide and background colors, guides can now be turned off in the Production Worksheet.



### Invoking Print Preview with certain file formats

Previously, invoking **Print Preview** with certain file formats – e.g. HUS, BRO, CSD, etc – produced an 'Unspecified Error' and made the system unstable. This issue has now been resolved.

## File handling

### Importing EMB files

Previously, crashes sometimes occurred when importing e2 EMB using the **File > Import Embroidery** command. This issue has now been resolved.

### Converting CDR files to embroidery

Previously, some X4 sample designs failed to convert properly to stitches. This issue has now been resolved.

### Sending designs to machine with Japanese OS

Previously, there were problems associated with sending design to machine using **Stitch Manager** with a Japanese operating system and two-byte logon name. This issue has now been resolved.

### Opening AMT60 files in ES

Previously, there were problems opening AMT60 files saved in Bernina V6 into EmbroideryStudio. This issue has now been resolved.

### Opening sequin designs

Previously, opening some sequin run designs caused the software to crash. This issue has now been resolved.



### **'Subscript out of range' error when opening certain files**

Previously, some EMB files could not be opened in DecoStudio e2 because of a 'subscript out of range' error which caused the software to freeze. This issue has now been resolved.

### **PES trim enhancements**

EmbroideryStudio now supports trims between objects for PES file format.

## **Improvements with SP1**

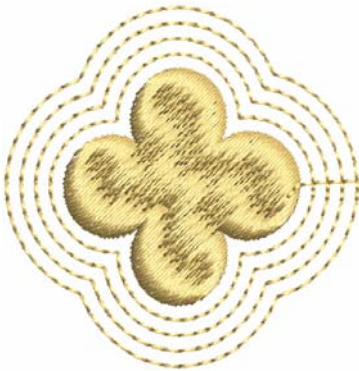
The following improvements that were first released with SP1 are also included in the SP2 release.

### **Digitizing**

Wilcom EmbroideryStudio e2.0Q SP2 software update contains the following digitizing improvements and fixes.

#### **Closest Join for offset objects**

The default **Closest Join** function is now applied correctly to offset objects.



#### **Backtrack run object alignment**

Backtrack run object needle points now align themselves correctly with the source object.

#### **Backtrack with closed objects**

When applied to closed objects, the **Backtrack** tool created a repeat. Both objects were stitched identically with the same start and end point, not reversed as expected. This issue has now been resolved.

#### **Point & Stitch message**

Point & Stitch sometimes displays a 'Not Applicable' message even when stitches can be generated. This issue has now been resolved.

#### **Auto-Start End tool**

The **Auto-Start End** icon has been restored to the **Generate** toolbar.

#### **Bling! improvements**

- Bling runs are now correctly generated when two or more coincident curve nodes are digitized while digitizing a curved line.



- When digitizing bling runs with **Expand to Fit** positioning, some bling were shifted from the expected position. This issue has now been resolved.

### **Digitizing with DST/EXP files**

Newly digitized embroidery objects are now correctly displayed when an empty DST/EXP file is opened.

### **Enable Auto Scroll for Freehand tools**

With the introduction of the **Freehand** digitizing tools, the **Auto Scroll** option needs to be turned off. However, with conventional digitizing, **Auto Scroll** generally needs to be on. A new **Ctrl+Shift+A** shortcut has been added to assist in quickly toggling between **Auto Scroll** on and **Auto Scroll** off.

### **Synchronisation of line widths**

Vector line widths are now synchronized in **Embroidery** and **Graphics** modes.

## **Editing**

Wilcom EmbroideryStudio e2.0Q SP2 software update contains the following editing improvements and fixes.

### **Rotating clockwise using the Transform dialog**

The **Angle** field in the **Transform** dialog now accepts angles from 0 to  $\pm 180$  degrees.

### **Object Properties menu item enabled**

The **Stitch > Object Properties** menu item is now enabled even if no object is currently selected. The same command is enabled via the **View** toolbar.

### **Copy and paste operations**

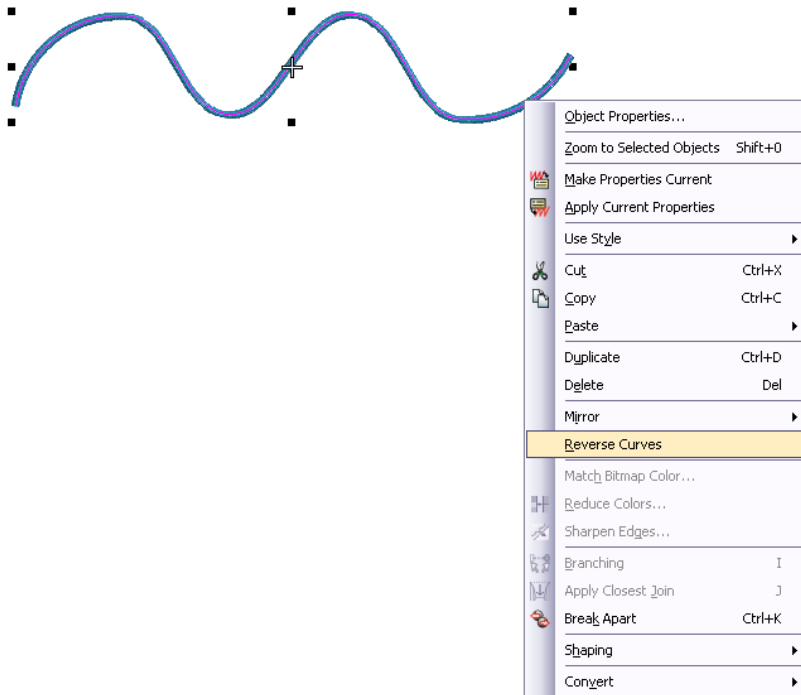
Duplicate and Copy / Paste operations did not work correctly for some designs. This issue has now been resolved.

### **Apply Closest Join object generation**

Selected un-generated objects are now correctly generated when the **Generate > Apply Closest Join** button is clicked.

### **Reverse curves**

The **Edit > Reverse Curves** command has now been implemented for open as well as closed objects including Run, Input C, Motif Run, and Sequin Run. It is also available from the popup (right-click) menu.



### Changing sequin run start point

Previously, you could not change start and end points for sequin run objects. You can now change the start point using the **Reshape** function. The end point is fixed.

### Breaking apart appliqué objects

When breaking apart appliqué objects, external connectors are now correctly applied to each component. All component objects now have their own tie-ins.

### Applying Lap Corners to Input C objects

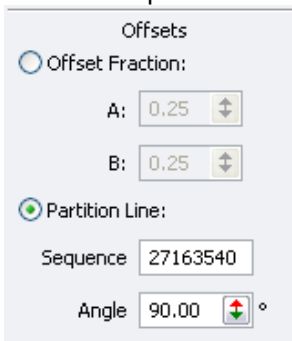
Previously, applying **Lap Corners** to Input C objects with after adjusting column width, caused the object to return to its original width. This issue has now been resolved.

## Stitching

Wilcom EmbroideryStudio e2.0Q SP2 software update contains the following stitching improvements and fixes.

### Tatami partition line sequence

The Tatami partition line **Sequence** field now correctly accepts up to eight (8) digits.



### Star stitch quality

In previous releases, stitch quality of some Star objects was compromised due to extra stitches being generated. This issue has now been resolved.

### Generating stitches with Make Properties Current

Stitches are now generated by default after applying **Make Properties Current** to an object with stitch effects applying.

### Selecting objects with multiple designs open

The software sometimes crashes on pressing **Ctrl+A** with multiple designs open. This issue has now been resolved.

### Opening older designs

When opening some older designs, objects may appear without stitches. This issue has now been resolved.

### Regenerating stitches for older designs

Some designs created in ES 2006 using the Barudan Z series machine format caused system crashes or hangs when regenerating stitches. This issue has now been resolved.

## Lettering

Wilcom EmbroideryStudio e2.0Q SP2 software update contains the following lettering improvements and fixes.

### Text conversion

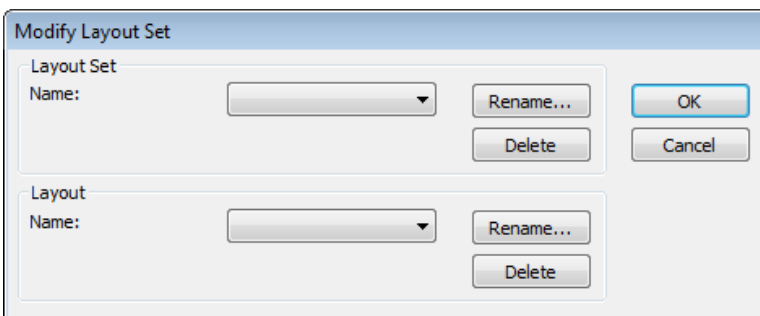
The following text conversion issues have been resolved:

- Converted artistic text now appears correctly on the baseline when center or right justification is used.
- In previous releases, fonts do not appear in the **Convert TrueType Font** dialog (Special > Alphabet > Convert TrueType Font) on Windows 7 if their show/hide status in the Control Panel is set to 'Hide'.

### Team names

The following team name issues have been resolved:

- After adding a name in the **Name Order** dialog, the scrollbar now correctly scrolls to the end of the list.
- The team name layout now updates as expected when changing name order.
- Currently, enlarging the **Team Lettering > Team Members** list columns caused some display problems. The list is now correctly refreshed after enlarging.
- Alphabet selection now remains constant when editing lettering and team member in team names designs.
- Team name layouts are now sorted alphabetically in **Icon** view.
- If you load a design that contains team names with an alphabet which is not available on the machine, you will be prompted to substitute the alphabet.
- You can now manage your custom team name layout sets via the **Special > Alphabet > Modify Layout Set** command.



- It is now possible to select and edit individual names in the **Team Name List**.

Frame 1		
Name 1	Name 2	Name 3
John	Smith	Sydney
Jack	Jones	Atlanta
William	Brown	London
David	Johnson	Delhi
Mark	Roberts	Sheffield

- Team Name **Layouts** now includes specific Japanese alphabet layouts. Note, however, that these layouts are installed **only** if Japanese language is selected during installation.

### Alphabets

The following embroidery alphabet issues have been resolved:

- The letter 'i' in the **Script4** alphabet now correctly generates a single character.
- The letter 'u' is now correctly generated when using **2 Col Plain Script** alphabet.

### Monogramming

The following monogramming issues have been resolved:

- Underlay and pull compensation settings can now be changed for monogram lettering via the **Monogramming > Lettering > Modify Properties** option.
- With the **Check Design Integrity** option turned on, design integrity errors sometimes occur when deleting monogramming objects. This issue has now been resolved.

## Graphics conversion

Wilcom EmbroideryStudio e2.0Q SP2 software update contains the following graphics improvements and fixes.

### Conversion of new B-Spline Curve objects

The **B-Spline Curve** tool is a very useful digitizing tool new to CorelDRAW X5. It appears together with the other curve tools such as **Freehand**, **Bezier**, **Pen**, etc. Objects created with these curve tools can be converted directly to embroidery. Now **B-Spline Curve** objects can also be directly converted without having to first convert them to curves.

### Match to Embroidery Palette for conversion from Graphics to Embroidery



The EmbroideryStudio default color palette is based on CorelDRAW's default CMYK palette. Due to color management improvements in CorelDRAW X5, the RGB values of the CMYK palette no longer match those of the EmbroideryStudio color palette. A new **Match to Embroidery Palette** tool on the

**Universal** toolbar allows you to toggle on/off thread color matching. When turned on, converted vector objects are assigned the nearest matching thread color in the current color palette. When turned off, a new color is added to the current palette based on the equivalent RGB value of the CMYK color.

### Photographic conversion



Use **Photo Flash** to create embroidery from photographs or other images, color or grayscale.

Grayscale images are made up of different shades of gray pixels. Color images are automatically converted to grayscale when you apply **Photo Flash**. The Universal toolbar now includes a **Tag as**

**Photo Flash** icon which allows you to convert photos to **Photo Flash** embroidery.



## File output

### Saving stitch files to different machine formats

In previous versions, stitch edits were lost if the stitch file saved was different to the currently selected machine format – e.g. saving to (Tajima) DST format with Barudan Z series selected as the current machine format. Stitch edits are now preserved.

### MDFE output options

Clicking **Options** buttons in the **Multi-Decoration File Export** dialog now correctly invokes the relevant **Options** dialog for the selected file format. Affected formats include DAT, VEP, SAS, MST, T10, T15, and MJD.

### Bling Overcut values > 100%

Bling curves are now exported via the MDFE dialog when the **Overcut** parameter contains values > 100%.

### Opening designs saved with Barudan FDR-II Twin Sequin machine

Designs which have been saved with Barudan FDR-II Twin Sequin machine can now be opened into DecoStudio.

### Barudan Serial Protocol

The missing Barudan Serial Protocol has been restored to Stitch Manager and Machine Manager **Embroidery Machine Connection** dialog.

### Happy machine format

The Happy machine format has been reinstated to the machine format list.

### Saving files containing vector graphics to earlier formats

EmbroideryStudio now correctly saves files containing vector graphics to V2006 and earlier formats.

### Changing file names

Previously, when changing file names in the **Save As** dialog, the name was not retained if the file type was also changed. This issue has now been resolved.

### Saving CDR files from Graphics mode

Files can now be saved in CDR format from **Graphics** mode.

### Support for reading of Nova (\*.DSN) files

The reading of Nova (\*.DSN) files is now supported.

## Support Husqvarna Viking VP3 file format

Opening and saving of Husqvarna Viking VP3 format is now supported.

## Support for YNG file format for GemMaster software

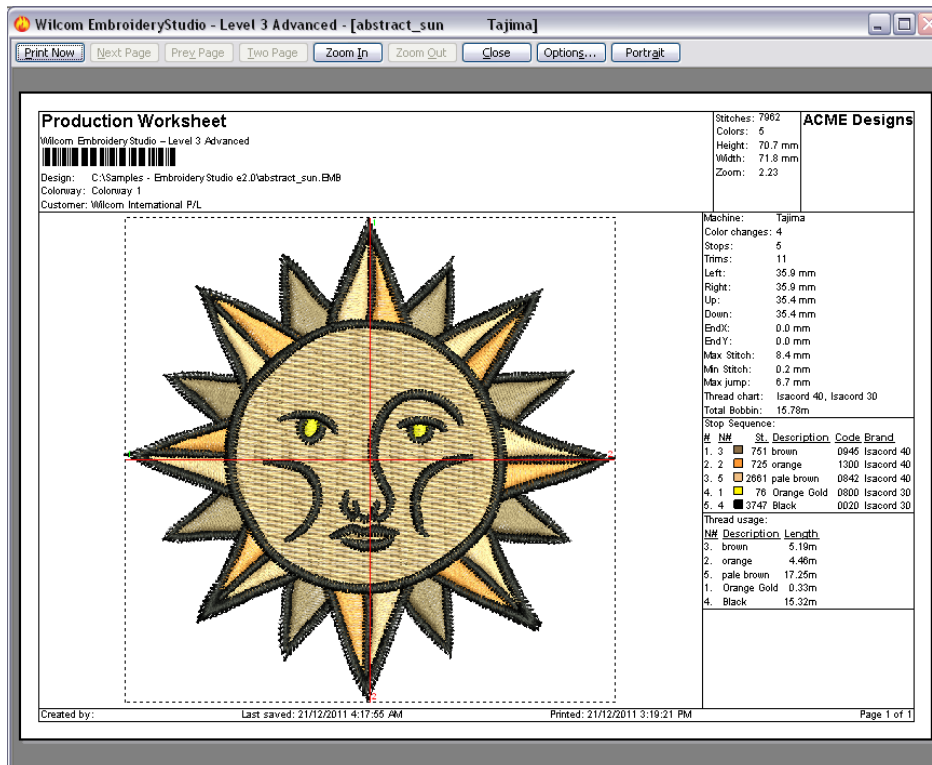
The YNG file format can now be used to create Bling! designs and save in the file format GemMaster can read.

## Direct-connect to CAMS automatic bling placement machines

Direct connection to CAMS automatic rhinestone placement machines is now supported. See below.

## Production Worksheet improvements

This software update includes a number of improvements to the production worksheet, including contents, layout and font size.



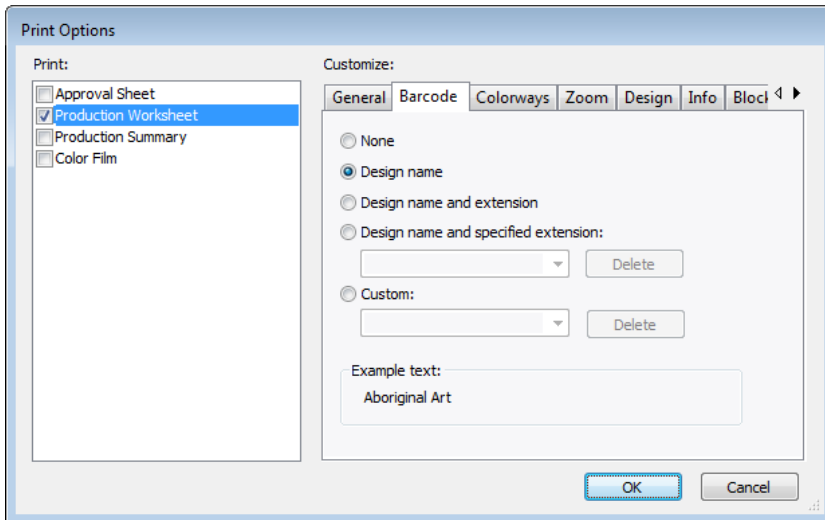
## Production worksheet layout

The revised production worksheet includes the following improvements to worksheet layout:

- The report now uses the standard header/footer incorporating company name/logo, customer name, colorway name, user-specified fonts, margin control, etc.
- Company name / logo appears on each page of the worksheet.
- Multiple vertical 'full info' strips can now be allocated on a single page if the zoom parameters allow it. This often saves on an extra page being printed.
- Alternatively, there is an added **Start New Page** option on **Info** tab to force the layout to start vertical info strips on a separate page.
- Page numbers are displayed on each page of the worksheet.

## New barcode option

The revised dialog also includes a new **Barcode** tab with customizable options:



Note that the **Barcode** tab includes the option to append a specified file extension to the design name.

### Production worksheet header

The following issues to do with the production worksheet header are now implemented:

- The product name, including the product level, now appears correctly on the worksheet beside the company name.
- The worksheet now allows two lines for filename and size in the header in order to avoid conflicts with long filenames.
- The barcode is included in the standard header and is available for all reports.

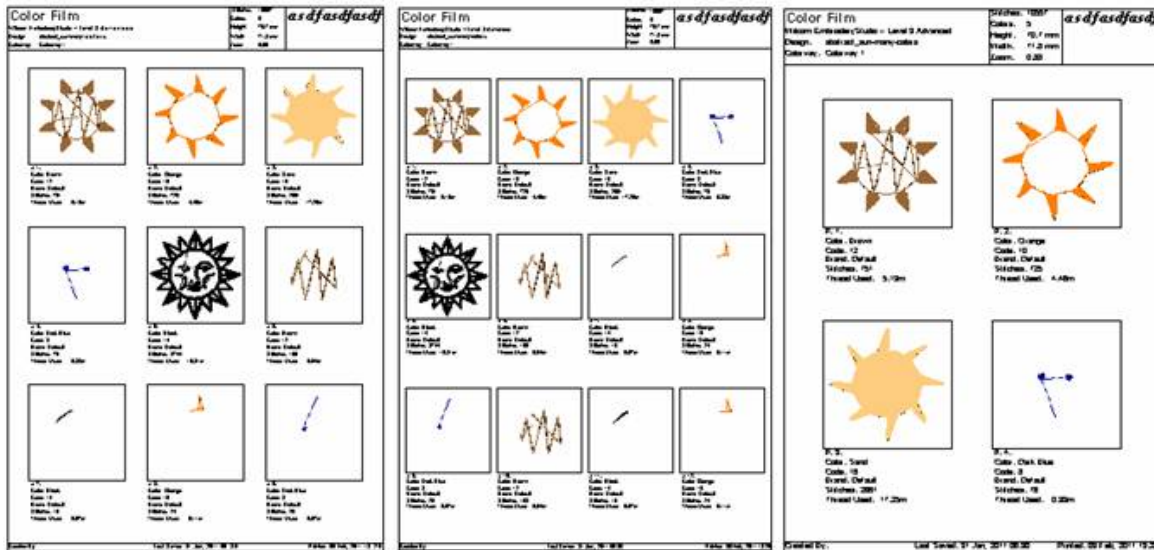
### Production worksheet general settings

The following issues to do with the production worksheet **Print Options > General** tab are now resolved:

- Production worksheet margin settings are now applied correctly.
- Text and heading fonts for the production worksheet can now be independently selected and applied correctly.
- Customer name now appears correctly in the production worksheet.  
**Note:** The customer name is not saved with the design. Reverting to factory defaults will clear customer names on a particular PC.
- The **Print Design Filename** option is restored and working correctly.
- Color film elements are now correctly shown in English when **Print in English** is enabled, irrespective of the operating system.
- Color Film and Team List reports now support user-selectable fonts. Additionally, use of different font sizes controls how many frames can be fit per page. For example, for Color Film:
 

Default 9pt font: 3x3 frames	Smaller 8pt font: 4x3	Larger 12pt font: 2x2
------------------------------	-----------------------	-----------------------





### Production worksheet included information

The following issues to do with the information included in the production worksheet are now resolved:

- The 'None' option in the **Info** tab now removes **all** printed information. No text is included on the worksheet.
- Worksheets now include information entered into the **Design Properties > Summary** tab, including comments but excluding keywords.
- The **Extents Box** and **Start/End Crosshair** options on the **Design** tab are now enabled for TrueView. They are still disabled, however, for the Approval Sheet.
- Thread Chart Type on the **Blocks** tab now prints all required brands for used threads using a comma-separated list.
- Any background fabric color used in the design now appears correctly in the production worksheet when the **Background** option is activated.
- The **Stop Sequence** tab now prints **Brand** and **Element** names in standard table columns, not on separate lines.

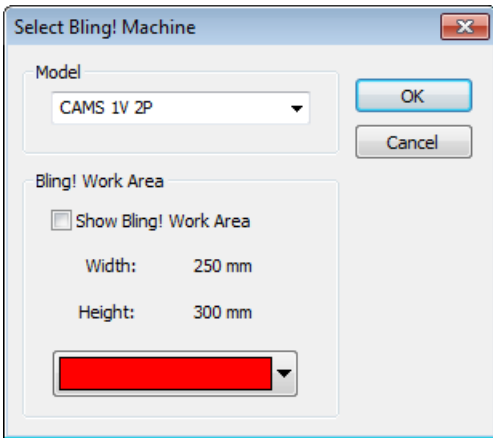
### Direct-connect to CAMS automatic bling placement machines

Direct connection to CAMS automatic rhinestone placement machines is now supported. A general procedure is outlined below.

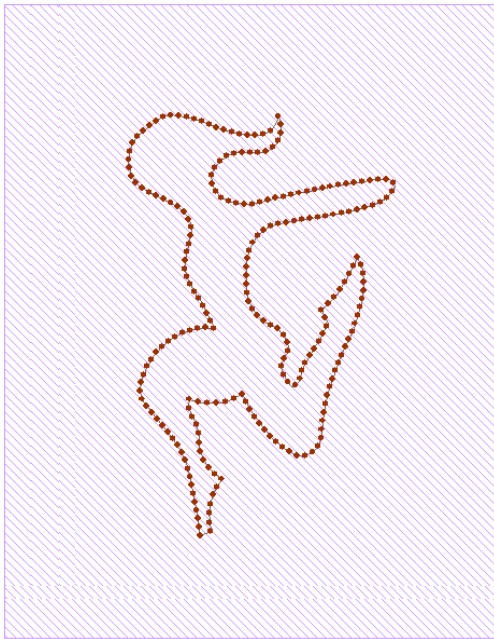
**Note:** Before executing the procedure, it is important that the machine drivers for your CAMS machine be properly installed. They need to be installed and the machine connected before setting up the COM port. Refer to your machine documentation.

#### Select bling machine

1. Select the machine you want to connect to via the **Machine > Select Bling! Machine** command.

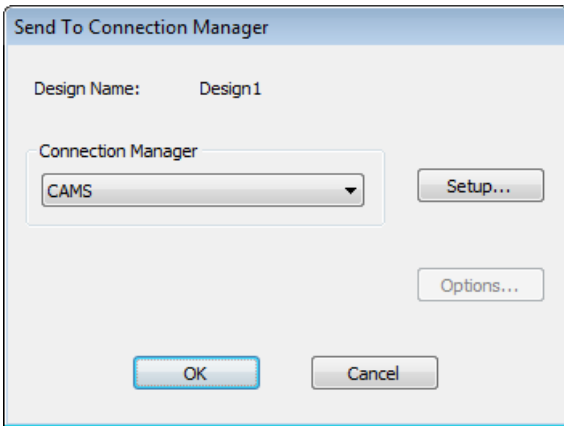


2. In the **Model** panel, select the machine model you are using.
3. Activate the **Bling!** work area to visualize the design within the work area of the selected machine model.
4. Set the color of the work area as desired.

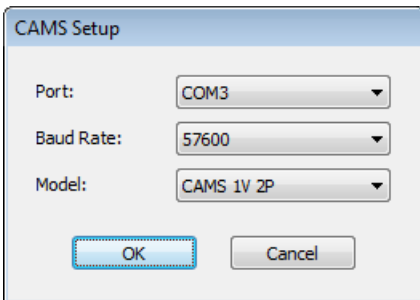


### **Send to Connection Manager**

1. From the **Standard** toolbar, click the **Send to Connection Manager** button.

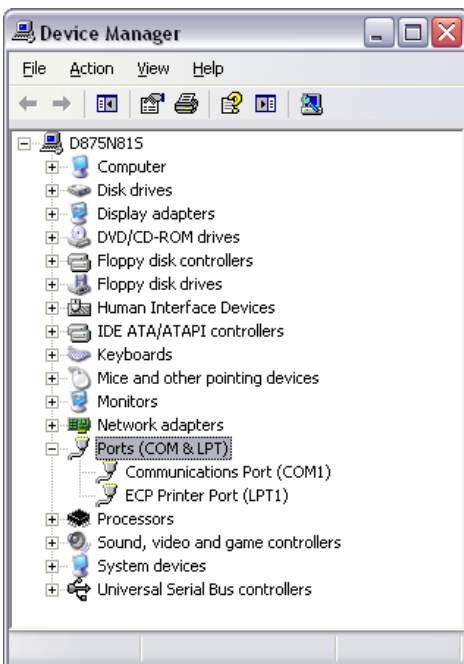


2. From the **Connection Manager** dropdown, select 'CAMS'.
3. Click the **Setup** button.



4. Check the communications port and baud rate settings.

If you are using an 'old school' serial connection, the COM port in the software should match the port to which the cable is connected. If you are using a USB connection, the COM port in EmbroideryStudio must match the 'virtual' COM port assigned to it. You can find this in Windows Control Panel > Device Manager.



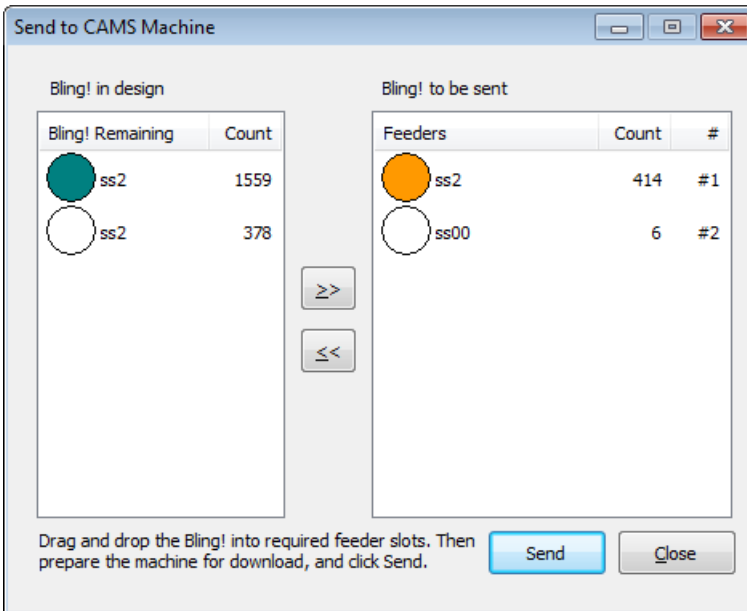
If you are using a USB connection and the COM port is not available for selection in EmbroideryStudio, you need to verify that your hardware drivers have been correctly installed and are up-to-date. Check your machine documentation for details.

The baud rate in EmbroideryStudio must match the baud rate at which the machine was configured to read the data. This is normally 57600 (the system default). However, you can confirm the value when you prepare the machine for download. The machine will display the baud rate on its console.

The model will default to the machine selected via the **Machine > Select Bling Machine** function. You can change it here if required.

5. Click **OK**.

The **Send to CAMS Machine** dialog opens.



6. Use this dialog to assign bling in the design to the available feeders on the CAMS machine.

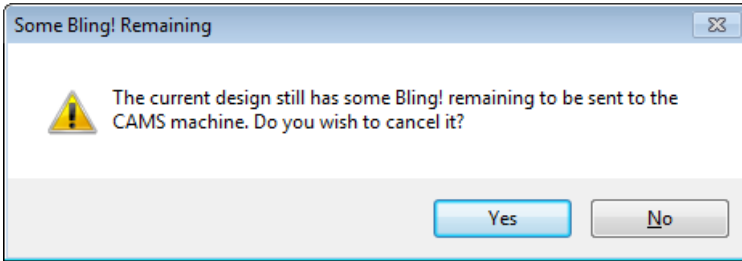
**Warning:** The machine **must** be prepared for download before pressing **Send**. If you try to send something before the machine is 'Ready', it may fail to read the next design.

7. Prepare the machine for download and click the **Send** button.

The precise workflow you follow will depend on the number of feeders available on the selected machine. For example, if you have a machine with two feeders which is currently set up to feed SS6 on Feeder #1 and SS10 on Feeder #2, and wish to output a design which contains SS6, SS8, SS10, you may do so like this:

- Drag SS6 to Feeder #1.
- Drag SS10 to Feeder #2.
- Prepare the machine for download.
- When the machine is 'Ready' for download, click **Send**.
- When the machine has finished receiving the file, run the machine to place all the SS6 and SS10 stones.
- Once the run is completed on the machine, replace the SS6 feeder on the machine with the SS8 feeder.
- In the software, drag SS8 to Feeder #1 (where you had previously dragged the SS6).
- Prepare the machine for download again.
- When the machine is again 'Ready', click **Send**.
- When the machine has finished receiving the file, run it in order to add the SS8 stones to the design already containing the stones from the previous run.

Depending on the number of bling types used in the design and number of available feeders, you may need to send bling more than once. You will be prompted if you exit before all bling has been sent to machine.



## Design management

### Batch recording of designs

DesignWorkflow again allows you to batch record multiple designs via the **Group Record** function.

### Due date field in Design Request form

Hiding the **Due Date** field from the DW design request form caused a crash when creating a new design request or viewing an existing design request. The problem has been resolved.

### Searching for clipart

The **Names** field in Embroidery Clipart accepts wildcard (\*) searches as it used to.

### Display of image files in Design Explorer

Image files are now correctly displayed in Design Explorer.

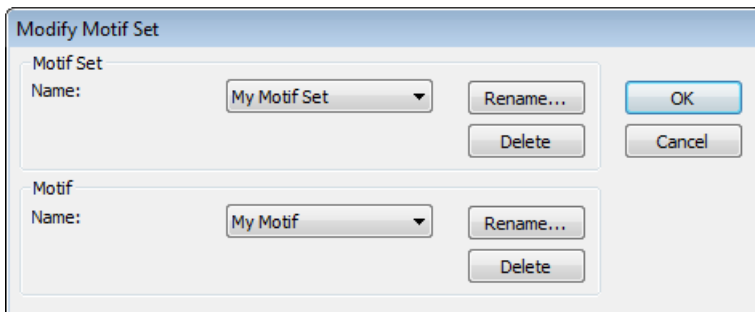
## Miscellaneous

### User-defined motifs of zero height

In previous releases, if a user happened to create user-defined motifs of zero height, EmbroideryStudio would crash when the motif was used. The software now requires you to create a motif of non-zero height.

### Manage custom motif sets

You can now manage your custom motif sets via the **Special > Motif > Modify Motif Set** command.



### Icon association on Vista and Windows 7

Icon association is now correctly displayed on Vista and Windows 7 systems when viewing medium, large and extra large icons in Windows Explorer.

### Desktop icons

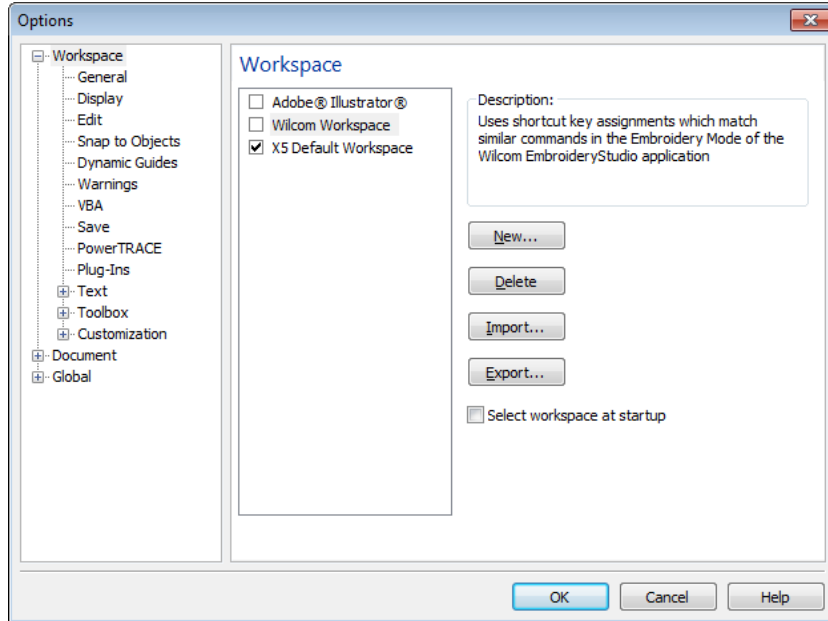
Previously, desktop shortcuts sometimes have no icon association when software is installed over an earlier build. This issue has now been resolved.

## Cross Stitch Fill dialog conversions

The mm value in the **Cross Stitch Fill** dialog now converts correctly when changing the global measurement system – e.g. selecting 'US' in the View toolbar dropdown list.

## Wilcom Workspace in Graphics mode

Wilcom **Workspace** is now available for selection via the **Tools > Options** dialog in **Graphics** mode.



## Design integrity

Design integrity errors occur when ungrouping after certain actions involving grouping and deleting objects. This issue has now been resolved.

## Language conflicts in Graphics mode

EmbroideryStudio freezes and hangs when switching to graphics mode if the Corel language is set to French or Italian. This issue has now been resolved.

## Closing design without making changes

After switching to **Graphics** mode, the user is prompted to save changes when closing a design whether changes have been made or not. This issue has now been resolved.

## Japanese language issues

- The **Design Measurement System** box has been widened to accommodate Metric measurement in Japanese language.
- The date is now consistently displayed in Japanese language on the bottom line of the Production Worksheet.

## Solving problems

If you encounter a problem with in Wilcom EmbroideryStudio e2.0Q SP2, refer to the following sources for help:

- Wilcom EmbroideryStudio e2.0 User Manual – from the Windows Programs group, select **Wilcom ... > Documentation > Onscreen Manual**
- Wilcom EmbroideryStudio e2.0 Onscreen Help – select **Help > Help Topics**
- Windows help – select **Start > Help and Support**

- Windows manual – documentation supplied with your hardware.

If you are unable to solve a problem, you should contact your Wilcom dealer. Before seeking help, check that your PC meets the system requirements, and check the Troubleshooting chapter of the Onscreen Manual.

## Copyright

Copyright © 1990-2012 Wilcom Pty Ltd. All rights reserved.

No parts of this publication or the accompanying software may be copied or distributed, transmitted, transcribed, stored in a retrieval system or translated into any human or computer language, in any form or by any means, electronic, mechanical, magnetic, manual, or otherwise, or disclosed to any third party without the express written permission of:

Wilcom Pty Ltd. (A.B.N. 43 001 971 919)  
146-156 Wyndham Street, Alexandria (Sydney)  
New South Wales, 2015, Australia  
PO Box 581, Alexandria, 1435  
Phone: +61 2 9578 5100  
Fax: +61 2 9578 5108  
Email: [wilcom@wilcom.com.au](mailto:wilcom@wilcom.com.au)  
Web: <http://www.wilcom.com.au>

TrueView™ and Point & Stitch™ are trademarks of Wilcom Pty Ltd. Portions of the imaging technology of this Product are copyrighted by AccuSoft Corporation. The EPS File Import/Export Converter used in this Product is copyrighted by Access Softek, Inc. All rights reserved.

## Contact

If you have any questions, please contact your local Wilcom dealer or distributor in your country.